



Roxtec R doorvoering met SLFO/RI

Doorvoering die kan worden geopend voor afdichting rondom bestaande kabels/leidingen

De Roxtec R met SLFO/RI is een doorvoering met bus voor kabels en leidingen. De compressie is geïntegreerd in het doorvoeringsframe en de afdichting wordt dan ook bereikt via expansie in de bus. De standaard afdichtmodules kunnen worden aangepast aan kabels en leidingen van verschillende diameters en kunnen worden gebruikt om reservecapaciteit op te nemen in de doorvoering. Het net op de achterzijde biedt bescherming tijdens horizontale installaties (niet inbegrepen in R 70 en R 75). Het frame kan eenvoudig worden opengesneden voor installatie rondom bestaande kabels of leidingen. De bus die kan worden geopend, wordt op de constructie bevestigd met bouten.



- Ideaal voor retrofittoepassingen

Producteigenschappen



Brandvertragend



Waterdicht



Gasdicht



EMI-bescherming

Installatiestructuur



Metaal

Montagetype



Bouten

Specificaties en certificaten

Brand

- A-KLASSE volgens IMO 2010 FTP-code
- H-KLASSE volgens IMO 2010 FTP-code + HC-brandcurve

Dichtheid

- Gas: 1 bar (calamiteitendruk)
- Water: 2 bar (calamiteitendruk)

Supports

- Potentiaalvereffening
- Elektromagnetische afscherming

Afmetingen frame

mm/kg

De onderstaande frame-uitvoeringen zijn een beperkte selectie. Ga naar [roxtec.com](https://www.roxtec.com) voor het volledige assortiment frames en configuraties.

| Titel | Vrije doorvoerruimte | Afmetingen opening Ø | Gewicht | Art. nr. |
|-------------------|----------------------|-------------------------|---------|---------------|
| R 50 AISI316 | 30 x 30 | 50 - 52 | 0.21 | 5R00000012875 |
| R 75 AISI316 | 40 x 40 | 75 - 77 | 0.5 | R000000751021 |
| R 70 AISI316 | 40 x 40 | 70 - 72 | 0.45 | R000000701021 |
| R 75 EMC AISI316 | 40 x 40 | 75 - 77 | 0.5 | ER00A00751121 |
| R 100 AISI316 | 60 x 60 | 100 - 102 | 0.8 | R000001001021 |
| R 100 EMC AISI316 | 60 x 60 | 100 - 102 | 0.8 | ER00A01001121 |
| R 100 GALV | 60 x 60 | 100 - 102 | 0.8 | R000001001018 |
| R 125 AISI316 | 80 x 80 | 125 - 127 | 1.1 | R000001251021 |
| R 125 EMC AISI316 | 80 x 80 | 125 - 127 | 1 | 5ER0000004913 |
| R 125 GALV | 80 x 80 | 125 - 127 | 1.1 | R000001251018 |
| R 127 AISI316 | 80 x 80 | 127 - 129 | 1.1 | R000001271021 |
| R 127 EMC AISI316 | 80 x 80 | 127 - 129 | 1 | ER00A01271121 |
| R 127 GALV | 80 x 80 | 127 - 129 | 1.1 | R000001271018 |
| R 150 AISI316 | 90 x 90 | 150 - 152 | 1.6 | R000001501021 |
| R 150 EMC AISI316 | 90 x 90 | 150 - 152 | 1.7 | ER00A01501121 |
| R 150 GALV | 90 x 90 | 150 - 152 | 1.6 | R000001501018 |
| R 70 EMC AISI316 | 40 x 40 | 70 - 72 | 0.46 | ER00A00701121 |



| Titel | Vrije doorvoerruimte | Afmetingen opening Ø | Gewicht | Art. nr. |
|-------------------|----------------------|-------------------------|---------|---------------|
| R 200 AISI316 | 120 x 120 | 200 - 202 | 2.6 | R000002001021 |
| R 200 EMC AISI316 | 120 x 120 | 200 - 202 | 2.7 | ER00A02001121 |
| R 200 GALV | 120 x 120 | 200 - 202 | 2.6 | R000002001018 |

Gegevens van afdichtcomponenten

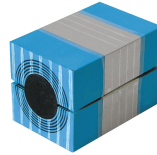
Afdichtcomponenten



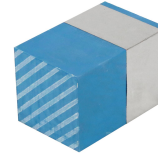
SLFO/RI buis



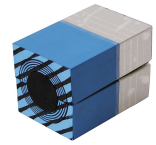
vetstick



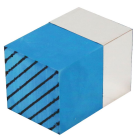
RM ES module met Multidiameter™



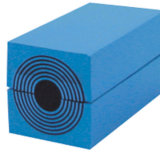
Massieve RM ES compensatiemodule



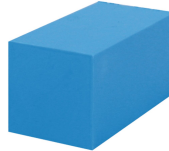
RM PE module met Multidiameter™



Massieve RM PE compensatiemodule



RM module met Multidiameter™



Massieve RM compensatiemodule

Ga naar [roxtec.com](https://www.roxtec.com) voor uitgebreide informatie.

The product information provided by Roxtec does not release the purchaser of the Roxtec system, or part thereof, from the obligation to independently determine the suitability of the products for the intended process, installation and/or use.

Roxtec gives no guarantee for the Roxtec system or any part thereof and assumes no liability for any loss or damage whatsoever, whether direct, indirect, consequential, loss of profit or otherwise, occurred or caused by the Roxtec systems or installations containing components not manufactured by an authorized manufacturer and/or occurred or caused by the use of the Roxtec system in a manner or for an application other than for which the Roxtec system was designed or intended.

Roxtec expressly excludes any implied warranties of merchantability and fitness for a particular purpose and all other express or implied representations and warranties provided by statute or common law. User determines suitability of the Roxtec system for intended use and assumes all risk and liability in connection therewith. In no event shall Roxtec be liable for indirect, consequential, punitive, special, exemplary or incidental damages or losses.

The Roxtec products are offered and sold in accordance with the conditions of the Roxtec General Terms of Sales. The latest version of the Roxtec General Terms of Sales can be downloaded from <https://www.roxtec.com/en/about-us/about-roxtec/general-terms-of-sales/>

We reserve the right to make changes to the product and technical information without further notice. Any errors in print or entry are no claims for indemnity. The content of this publication is the property of Roxtec International AB and is protected by copyright.

This document was generated on: 2024-04-18